



The beginning of each new year offers a wonderful opportunity to examine where we've been and where we're going. We are excited about where we are going—and a little sad about the things we are planning to leave behind. With a curious mixture of anticipation and sadness, we are announcing that for the first time we are retiring several Technique Tuesday products. The products in this supplement remain popular with our customers. We have loved these stamps and accessories but now it is time for them to retire.

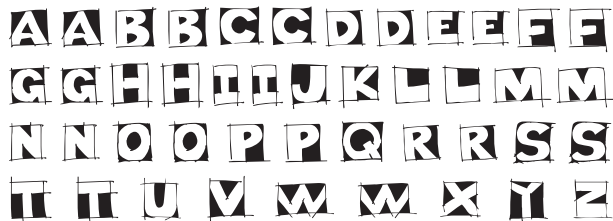
Retirement announcements can cause demand to increase so we have stocked up on these items to meet the short-term needs of both our wholesale and retail customers. However, we are not psychic so we have no way of gauging what the actual demand will be. We are committed to filling all quantities placed on Winter CHA orders. We may have some left after winter CHA but quantities will probably be pretty limited.

So please, as you take this stroll down retirement lane, remember the playfulness of Daydream, with its reverse-image, blocky sketchiness... the relaxed feeling of a hand painted sign evoked by Lemonade Stand... the shadowed physique and unfaltering strength of Underground... the etched-in-stone façade of Relic... and the beauty and classic elegance of Painted in Paisley. Your Technique Tuesday Clear Stamp Collection will be incomplete without these unforgettable sets.

Products Retiring in 2006

Daydream Alphabet Stamps

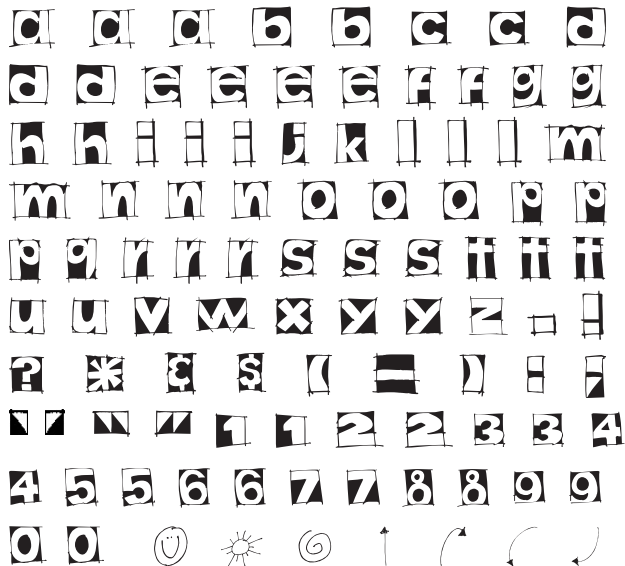
We named this lettering style Daydream but people seem to come up with their own names for these sets. We've heard people call them sketchy, reverse image, playful, colorful, and boxy. But most often people just call them the "blocky ones." If you've got kids in your life or just want to bring a large dollop of fun into your projects, you need these alphabet sets. This is one of our top selling lettering styles and you'll quickly understand why.



(Actual Size)

Daydream Capital Letters – Medium

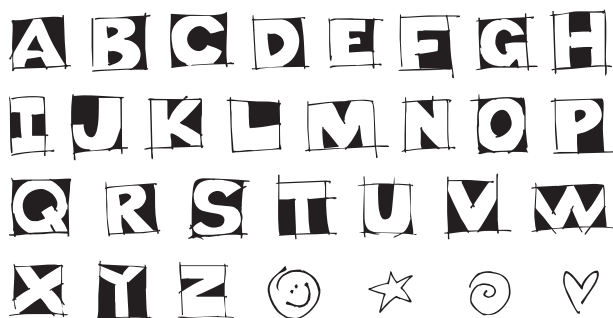
Code: DDCM



(Actual Size)

Daydream Lowercase Letters, Numbers, and Punctuation – Medium

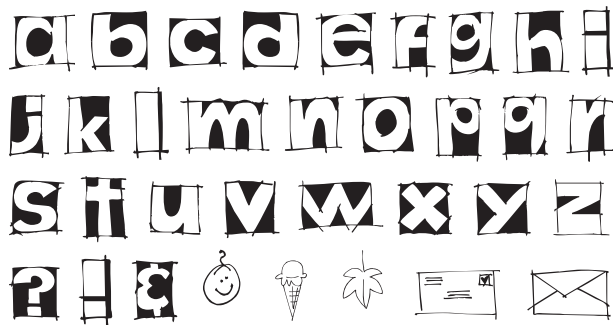
Code: DDLM



(Actual Size)

Daydream Capital Letters – Large

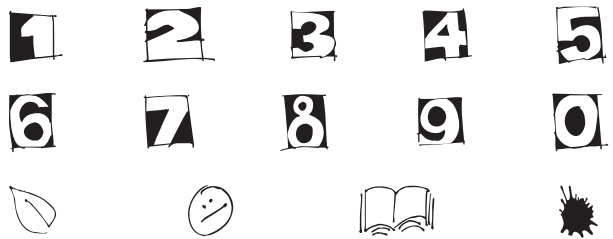
Code: DDCL



(Actual Size)

Daydream Lowercase Letters – Large

Code: DDLL



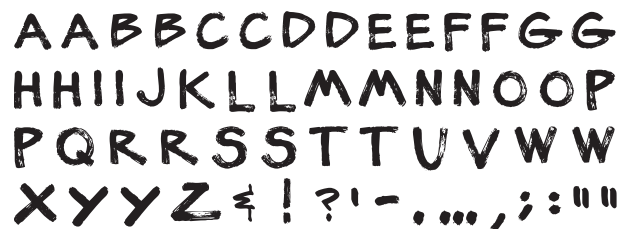
(Actual Size)

Daydream Numbers – Large

Code: DDNL

Lemonade Stand Alphabet Stamps

Our Lemonade Stand alphabet sets bring back the relaxed feeling of a long summer day or the rustic coziness of a log cabin. Imagine little kids with hand-lettered signs advertising a cool glass of lemonade for pocket change. Or think about the paintbrush letters on the weathered boards of a barn door or on a “gone fishing” sign. These letters are versatile and fun!



(Actual Size)

Lemonade Stand Capital Letters and Punctuation – Medium

Code: LSCM



(Actual Size)

Lemonade Stand Lowercase Letters and Numbers– Medium

Code: LSLM

A B C D E F G H I J
K L M N O P Q R S T
U V W X Y Z ■ ■ ■ □
* ~

A B C

(Actual Size)

Lemonade Stand Capital Letters – Large

Code: LSCL

a b c d e f g h i
j k l m n o p q r
s t u v w x y z

a b c

(Actual Size)

Lemonade Stand Lowercase Letters Large

Code: LSLL

0 1 2 3 4 5 6 7 8 9
\$ # N ° : ; € " . ' , ? !

1 2 3

(Actual Size)

Lemonade Stand Numbers and Punctuation – Large

Code: LSNL

PAINTED IN PAISLEY Alphabet Stamps

For centuries, the classic elegance of paisley has won the hearts of both designers and consumers. This recent rebirth of paisley has made it an essential for every artist and crafter's closet. With its delicate shadow, this alphabet transcends traditional applications to work beautifully as a cowboy print or an elegant bohemian monogram. The unique appeal of this alphabet is unparalleled!

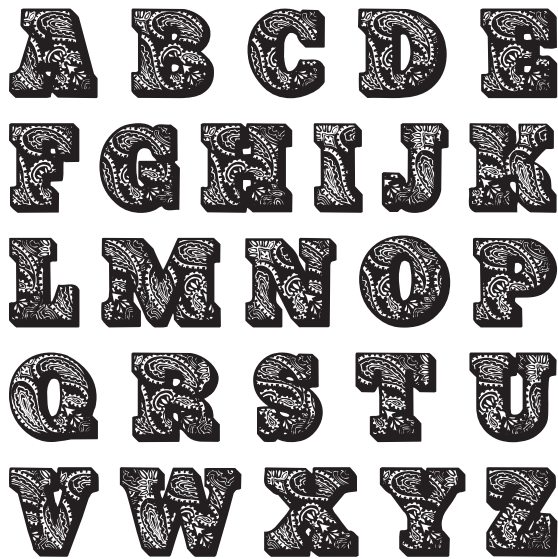
A A B C D E E
F G H I I J K
L L M N N O
P Q R R S S T
U V W X Y Z

A B C

(Actual Size)

Painted in Paisley Capital Letters – Large

Code: PPCL



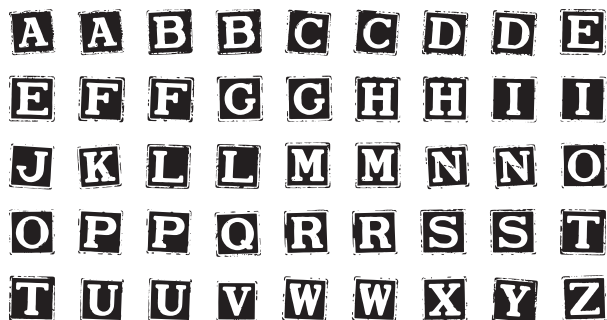
(Actual Size)

Painted in Paisley Capital Letters – Extra Large

Code: PPCX

RELIC Alphabet Stamps

Monumental. Colossal. Epic. All words that befit this alphabet. The etched-in-stone look and reverse-image style offer amazing versatility and adaptability. Perfect for scrapbooking, card-making, and paper crafting, our new Relic alphabet stamps will make an enormous impact on you, but not on your pocket book!



(Actual Size)

Relic Capital Letters – Small

Code: RECS

UNDERGROUND Alphabet Stamps

Inspired by the London Underground, this lettering style takes you on a journey. From the weathered walls of Parliament, through long queues for the tube, to the sleek London Eye, this alphabet has seen it all. With a stalwart physique, just a little rough around the edges, this alphabet is well-suited for projects that want to make a strong statement.



(Actual Size)

**Underground Capital Letters
and Numbers – Small**

Code: UGCS

A A A B B C C D D D
 E E E E F F G G H H
 I I I J K L L L M M
 N N N O O O P P P Q
 R R R S S S T T T U
 U V W W X Y Y Z . ,
 - \$ 0 0 1 1 2 2 3 3
 4 4 5 5 6 6 7 7 8 8 9 9

A B C

(Actual Size)

**Underground Capital Letters,
Numbers, and Punctuation – Medium**

Code: UGCM

A A B C D E E F
 G H I I J K L M
 N O O P Q R S T
 T U V W X Y Z

A B C

(Actual Size)

Underground Capital Letters – Large

Code: UGCL

0 1 2 3 4 5 6
 7 8 9 \$. , - №

1 2 3

(Actual Size)

**Underground Numbers and Punctuation
– Large**

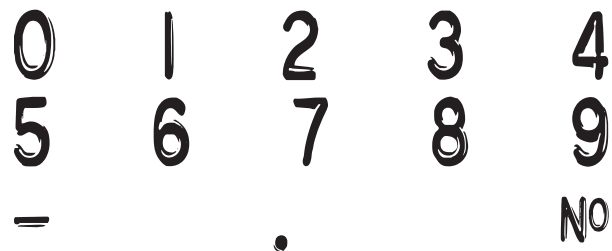
Code: UGNL

A A B C C D D E
 E F F G H H I I
 J K L L M M N N
 O O P Q R R S S
 T T U V W X Y Z

A B

Underground Capital Letters – Extra Large

Code: UGCX

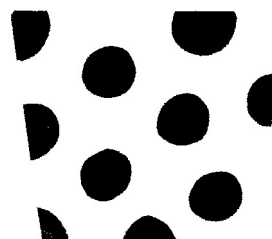
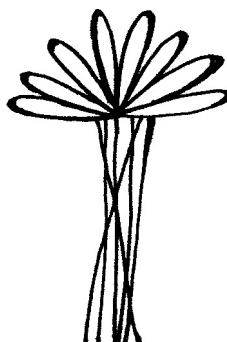
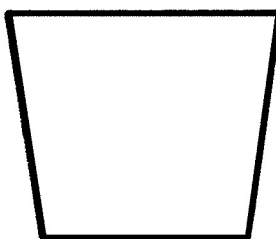


Underground Numbers and Punctuation – Extra Large

Code: UGNX



**PARTY
Celebrate**



(Actual Size)

Gift R.A.P.

Code: ISGR

You are going to have so much fun with this stamp set! Stamp the gift frame. Add some patterned paper. Then choose your bow. Whatever the occasion, and whatever your color scheme, you'll have the right gift wrap!



(Actual Size)

Classic Christmas Ornaments

Code: ISCC

Remember the peaceful beauty of your tree on Christmas Eve? These classic ornaments bring back those happy holidays. All four elegant ornaments stamp beautifully, on glossy paper, vellum, and velvet.

Cool Things to Stamp On – or Into!

With fabulous Technique Tuesday alphabet sets and versatile image stamps, you're ready to create unique embellishments using a wide variety of materials. We are excited to offer a line of accessories that have been carefully selected to work with the rest of the Technique Tuesday product line. These accessories are ideal for scrapbook pages, greeting cards and so much more.



Twill Tape - Narrow - Black Code: TTNRBK
Twill Tape - Wide - Black Code: TTWDBK

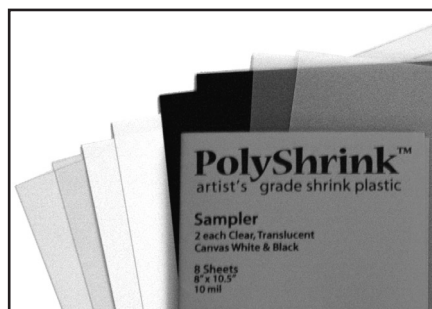
We retiring the black twill tape but we're keeping our other colors. Our wide twill tape is 1.5 inches wide and is sized to fit our large alphabet stamps. Our medium letter stamps and Words We Love sets fit perfectly on our narrow twill tape which is 0.75 inches wide. It comes on a 70 yard roll.



Paper Clay

Code: PC08

Using Technique Tuesday Clear Stamps and paper clay you can create letter tiles, tags, accents, and more. Paper clay works like the clay you used as a kid. When you stamp into paper clay while it is moist, you can create amazing works of art. When paper clay has dried, it is lightweight and durable. It can be painted, inked or chalked to match your project. It comes in an 8 ounce package.



Shrink Plastic

Code: SPSA

Using Technique Tuesday Clear Stamps and shrink plastic you can make a variety of beautiful embellishments. Whether you are recording your child's school life, preserving family history in a heritage album, or capturing your travel memories, you can create custom designed page elements that coordinate perfectly with your layout. You can also make jewelry, gift tags, magnets, charm bracelets, and more. This shrink plastic sampler pack contains 2 sheets of each of these colors: clear, translucent, white, and black.

Technique
Tuesday™

4888 NW Bethany Blvd, Suite K5 #361
Portland, OR 97229

Tel: 503-644-4073
Fax: 503-961-1668

www.TechniqueTuesday.com